



*Friday Notes* is designed to enhance communication among various agricultural sectors, educators, students, and the public who are interested in a variety of plant, animal, food, and environmental issues. *Friday Notes* advocates the pursuit of credible, unbiased, science-based information. Material contained in linked articles is from the original authors and does not necessarily reflect the views of CAST.

#### In This Issue..... Click to Read

[CAST Publications Past, Present, Future--P. 2](#)

[Animal Agriculture News](#)

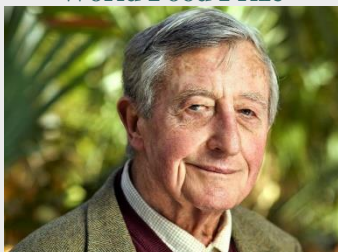
[Food Science and Safety News](#)

[Plant and Environment News](#)

[International News](#)

[General Interest News](#)

#### World Food Prize



[Simon N. Groot of the Netherlands will receive the 2019 World Food Prize](#) for his transformative role in empowering millions of smallholder farmers in more than 60 countries to earn greater incomes through enhanced vegetable production.

#### Something to Chew On

This Kansas State University site provides [episodes that explore the complexity and nuance of the global food system](#), celebrates the progress we have made, and debates the best ways for humans to move forward.

#### Over the Air Waves

The USDA's [weekly radio stories](#) include a variety of topics--from rural housing to swine disease to the popularity of spinach.

#### Adesina Honored

June 14, 2019

## Labeling Issues Still on the Shelf

*New regulations coming?*

Recently, the FDA and the USDA indicated that [changes are coming](#) in the way consumers shop for groceries. The agencies are considering [new directives for food labeling](#)--specifically, the "use by" and "sell by" dates. One of the best explanations of this type of labeling came from a CAST video titled [What Is the Difference between Sell By and Use By Dates?](#)



Food labeling brings up many issues, and in [the first of a series](#), Kim Nelson uses personal experiences and insights to set the foundation for why we need clear, informative labels. Government agencies set policy, but companies, producers, and consumers will be affected by the rules. CAST has several publications that provide solid, science-based background information, including the issue paper [Process Labeling of Food: Consumer Behavior, the Agricultural Sector, and Policy Recommendations](#). Note: Related labeling story in Food Sec. below.

## News and Views

**Animal Welfare:** The Fair Oaks animal abuse issue has many angles to it, and plenty of news outlets and social media modes have covered it. In this editorial, Purdue University's animal welfare expert Candace Croney takes an overall view of the [lessons we can learn from such incidents](#). Dr. Croney was the co-chair for the CAST Task Force Report, [Scientific, Ethical, and Economic Aspects of Farm Animal Welfare](#).

**USDA Announcement--ERS and NIFA Move:** The U.S. Department of Agriculture will [relocate the Economic Research Service and National Institute of Food and Agriculture](#) to the Kansas City region.

**The Administration and Agriculture:** The White House [released a press statement](#) about recent agriculture-related issues. Pork producers [reacted to the biotech policy](#), and ethanol producers [commented about the E15 ruling](#).

The University of Alberta [awarded Akinwumi Adesina an honorary doctorate](#). The World Food Prize laureate and global agriculture expert told graduates that, "Success is about making a difference." Dr. Adesina was the [2010 BCCA honoree](#).



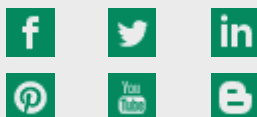
### Graduation Time

Cal Poly profiles the [unique stories of success and perseverance](#) that played out for six of the university's recent graduates.

### Send in Ideas

CAST [welcomes suggestions](#) for future publications and projects.

### CAST Social Media



**Policies, Projections, and Statistics:** Secretary of Agriculture Sonny Perdue issued a statement on [disaster and trade-related assistance](#), the World Agricultural Supply and Demand Estimates ([WASDE report](#)) was released, and the weekly [Crop Progress Report](#) shows the challenges of this year's planting season.

## News from the Far Side of the Barn

### Little Bog of Horrors (video):

Biologists discovered that [meat-eating pitcher plants](#) in Ontario's Algonquin Park wetlands consume not just bugs but also young salamanders.

**Just Sit on It:** A big dog finds a way to [stop a smaller dog from nipping](#) at it.

**Bees' Family Trees (video):** Father's Day is June 16, but [bees won't be celebrating](#)--they don't have dads because of their weird family trees.



**Feed Me, Seymour:** This meat-eating plant goes for the big ones. See story at upper left.

## Publications Update

### *CAST's science-based, peer-reviewed papers--past, present, future*

CAST has a long list of [publications available on its website](#), and many of them serve as long-term resources for policymakers and the public.

CAST Issue Paper 64--[Reducing the Impacts of Agricultural Nutrients on Water Quality across a Changing Landscape](#)--was released in April, and the following statistics reflect the impact of the publication two weeks after its three Washington, D.C., rollout sessions:

Total views of the press release were 4,074. Some of the contacts included 2,587 direct views on web crawlers, 985 targeted journalist influencers, and 125 media outlets that posted the press release.

With a potential audience of millions through the media, the publication also went directly to 5,900 through a Constant Contact list.

### *Forthcoming Publications*

CAST staff and expert outside contributors go through a long process for the development of peer-reviewed publications, and several key papers are coming during the next months:

***Protecting Food Animal Gene Pools for Future Generations--A paper in the series on The Need for Agricultural Innovation to Sustainably Feed the World by 2050***

***Interpreting Agricultural Chemical Residues Measured in Food or Milk***



**GMO Free--The Impact on Consumers, Retailers, Farmers, and the Environment**

**Ground and Aerial Robots for Agricultural Production: Opportunities and Challenges**

**Impact of Recruitment and Retention of Food Animal Veterinarians on the U.S. Food Supply**

**The Microbiome's Positive Impacts on Crops**

## Friday Notes News Categories

Photos courtesy of the Agricultural Research Service (top masthead); TopLatest News (globe at right). P. 1 Groot photo from worldfoodprize.org, grocery store pic from npr.org, and plant pic from newsweek.com. Animal Sec. cow pic from politico.com and elephant pic from dailymail.uk.co. Food Sec. breakfast diagram from matadornetwork.com and fruit pic from booktrib.com. Plant Sec. scientist photo from Becky Kirkland at ncstate.edu and banana cartoon from pinterest.com. Inter. Sec. tree man photo from youtube.com and insect pic from cnn.com. Gen. Sec. auctioneer photo from youtube.com and farm collage from agweek.jpg. Unless otherwise noted, photos courtesy of the USDA Agricultural Research Service.



### *Animal Agriculture and Environmental News*

**Pork Markets and Trade Disputes:** A pork production expert spoke recently about the need to expand U.S. [export markets and the effects trade disputes](#) have on those efforts.

**Poultry and Water Quality:** This project looked at ways to invent an affordable, energy-efficient apparatus to [remove pollutants from poultry wastewater](#).

**Home on the Range (opinion):** This rancher believes beef production is critical for maintaining healthy landscapes--and she thinks [cattle and wildlife can coexist](#).

**Poultry News:** This [online magazine](#) looks at "how chicken will succeed in the digitized proteins market."



This article says [dairy cows need a balanced diet](#)--does that include a daily glass of wine?

**Cows and Carbon:** Some evidence suggests that properly managed [cows can help sequester carbon in the soil](#).

**Gone Fishin':** According to this article, [aquaculture in general has been booming](#), both in Maine and globally.



**Small Steps in a Big World:** A female baby elephant--born June 8 at a zoo in Belgium--[takes its first steps and gets a welcome](#) from the adults.

**Biosecurity down on the Farm:** The Pork Checkoff--in collaboration with the National Junior Swine Association and Team Purebred--led an [industry panel on biosecurity and farm preparation](#).

### *Food Science and Safety News*



**Food Safety (video):** Unsafe food kills an estimated 420,000 people every year, according to the head of the World Health Organization--[children are most at risk](#).

**Health Debate:** Saying they do not have "any indication that these substances are a human health concern," the [Food and Drug Administration is trying to allay fears](#) after an agency study found "forever chemicals" in certain food products.

**Food Label Haziness:** Some consumers have [mixed feelings about eco-labels for food](#). This article looks at that ambivalence, and it lists some common terms. See lead story at the top of this edition for related information.

**Burger Nutrition:** Some consumers buy plant-based burgers because they think they are healthier, but that might not necessarily be the case. This report looks at [cholesterol, sodium, and other nutrition factors](#).



From spicy chickpea soup to cod liver oil to bacon and eggs, when it comes to [breakfast foods across the globe](#), there are as many ways to enjoy the first meal of the day as there are to say "good morning."



**Fruits and Veggies:** Preliminary findings in this report confirm what we often hear--[fruit and vegetable consumption is important](#), and inadequate intake may account for heart disease and strokes.

**Say "Yes" to Ugly Fruit:** Many consumers skip over bruised fruit or funny-shaped tomatoes, and such [pickiness leads to a huge amount of food waste](#). This company is one of many trying to ease the problem.

**Food of the Future:** This award-winning Nevada researcher explores how the evolution and genetic makeup of plants [allows them to grow under extreme environmental conditions](#) such as cold, heat, drought, and salt stress.

## Plant Agriculture and Environmental News



North Carolina State and three Danish institutions are starting a project that [explores ways to harness microbes to make crops more](#)

**Biotech Regulations:** President Trump is expected to sign an executive order meant to [streamline regulations and cut costs associated with biotechnology](#)--and to pressure international trading partners to lift barriers in the biotech industry.

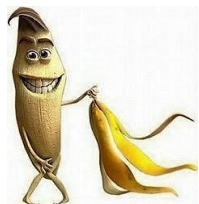
[resilient against environmental stresses](#). Microbiologist Amy Grunden will lead the international collaboration.

**Synchronicity (related to above):** For relevant, science-based information regarding international biotech regulations, check out the CAST Commentary [The Impact of Asynchronous Approvals for Biotech Crops on Agricultural Sustainability, Trade, and Innovation](#).

**A Discussion about Glyphosate (podcast):** In a podcast from earlier this year, Kevin [Folta discussed the issues surrounding glyphosate](#) with Dr. Geoffrey Kabat, a retired cancer epidemiologist and risk expert. Dr. Folta was the [2016 BCCA winner](#).

**Taking the Bloom Off:** The University of Florida introduced its "[Harmful Algal Bloom Task Force](#)." The group is examining the various nutrient sources causing algal bloom problems.

**Forage Relief?** A bill that would allow for [early haying and grazing of cover crops on prevent plant ground](#) has been introduced in the U.S. House. Also, some think the heavy [demand for cover crop seeds will lead to a shortage](#).



**Banana Attack:** New research suggests that climate change is aiding the spread of a [banana-attacking fungus in Florida](#).

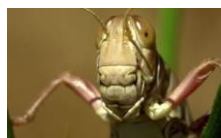
**Wheat Resilience:** To continue having food security in a changing climate, scientists are working to [make more heat-resilient crops, such as wheat](#).

## International News

**India's Johnny Appleseed (video):** An environmentally focused man in India [began planting a forest](#) in 1979--and now it is the size of Central Park (full version in the caption at right).

**Goat Ropers and Sheep Pilferers:** [Animal theft on the Caribbean island](#) of Antigua is big business, because many farmers use the traditional practice of allowing goats and sheep to roam free.

**New Feed, New Lamb?** A West Australian company is [converting carrots destined for landfill into animal feed](#) in hopes of producing a new type of lamb with the same marbling as Wagyu beef.



**Mangoes on the Menu:** The Philippines is [overflowing with excess mangoes](#) after unusual weather conditions caused a surplus of the fruit.

**Insect Invasion:** A huge [plague of locusts is wreaking havoc](#) on the Italian island of Sardinia--the worst insect invasion in more than 60 years.

**Seed Protest:** Approximately 1,500 farmers gathered in India recently to illegally plant government-banned genetically modified seeds--they say the biotech seeds [could improve their livelihoods and help reduce pesticide use](#).



Check out this [award-winning documentary short](#) about the man who planted a forest--related link upper left.

## General Interest News

**Faster than Rap? (videos):** This blog looks at the [speed, stamina, savvy, and rap flair needed](#) to be a good livestock auctioneer--now and in the past. See related link in the caption at right.

**Innovative Agriculture:** This list looks at [young innovators and their cutting-edge farming ideas](#) and practices.

**Farmers as Researchers:** This study gains insights into "[farmers as researchers](#)," and it uses interviews from participants in a University of Nebraska-Lincoln program.

**Summer Camping, FFA Style:** Many FFA members make use of the [opportunity to attend FFA camp](#) where they learn skills, have fun, and meet friends.



**Helping Mid-sized Farmers:** This [two-year program helps smaller farms](#), ranches, and fishing projects in an era when the "get big or get out" mantra is often loudest.

**Plastic Replacement?** Plastic is in the news, and like conventional farmers, organic farmers also rely on the product. The [hunt is on for natural, degradable solutions](#).



A recent article explains why livestock producers should [appreciate what auctioneers do for agriculture](#). Check related link at upper left.

## CAST Information

Check out CAST's page at the [YouTube site](#) to view highly regarded ag-science videos about probiotics, food safety, and water issues--or the latest video dealing with proposed mandatory labeling of GMO food items.



*CAST provides Friday Notes as a benefit to its members. Please do not forward, edit, copy, or distribute the Notes in any form to nonmembers without the express permission of the CAST Executive Vice President Kent Schescke ([kschescke@cast-science.org](mailto:kschescke@cast-science.org)). Instead, please encourage your colleagues to join CAST and thereby become eligible for all membership benefits. Contact Melissa Sly at 515-292-2125, ext. 232 or [msly@cast-science.org](mailto:msly@cast-science.org), or [CLICK HERE](#) for CAST membership information.*

## Societies, Companies, and Nonprofit Organizations Serving on the CAST Board of Representatives

- \* Agricultural & Applied Economics Association
- \* American Association of Avian Pathologists
- \* American Association of Bovine Practitioners
- \* American Bar Association, Section of Environment, Energy, & Resources-Agricultural Management
- \* American Dairy Science Association
- \* American Farm Bureau Federation
- \* American Meat Science Association
- \* American Meteorological Society, Committee on Agricultural and Forest Meteorology
- \* American Seed Trade Association
- \* American Society for Nutrition Nutritional Sciences Council
- \* American Society of Agricultural and Biological Engineers
- \* American Society of Agronomy



- \* American Society of Animal Science
- \* American Society of Plant Biologists
- \* American Veterinary Medical Association
- \* Aquatic Plant Management Society
- \* BASF Corporation
- \* Cal Poly State University
- \* Corteva Agriscience, Agriculture Division of DowDuPont
- \* CropLife America
- \* Crop Science Society of America
- \* Entomological Society of America
- \* Innovation Center for U.S. Dairy
- \* Land O'Lakes
- \* Bayer

- \* National Cattlemen's Beef Association, a Contractor to the Beef Checkoff
- \* National Corn Growers Association/Iowa Corn Promotion Board
- \* National Milk Producers Federation
- \* National Pork Board
- \* North Carolina Biotechnology Center
- \* North Central Weed Science Society
- \* Northeastern Weed Science Society
- \* Poultry Science Association
- \* Rural Sociological Society
- \* Society for In Vitro Biology
- \* Soil Science Society of America
- \* Syngenta Crop Protection
- \* The Fertilizer Institute
- \* Tuskegee University
- \* Tyson Foods
- \* United Soybean Board
- \* University of Nevada-Reno
- \* Weed Science Society of America
- \* Western Society of Weed Science

*CAST, through its network of experts, assembles, interprets, and communicates credible, balanced, science-based information to policymakers, the media, the private sector, and the public.*

## Members of CAST's Education Program

- \* Cal Poly-San Luis Obispo
- \* Cornell University
- \* Iowa State University
- \* Kansas State University
- \* Mississippi State University
- \* North Carolina Agricultural and Technical State University
- \* North Carolina State University
- \* Purdue University
- \* Texas A&M University College of Ag & Life Sciences
- \* The Ohio State University
- \* Tuskegee University
- \* University of Arkansas System Division of Agriculture
- \* University of California-Davis
- \* University of Florida Institute of Food and Agricultural Sciences
- \* University of Kentucky
- \* University of Missouri-Columbia
- \* University of Nebraska Agricultural Research Division
- \* University of Nevada-Reno College of Agriculture, Biotechnology and Natural Resources



**Dan Gogerty (Managing Communications Editor)**  
**Kimberly Nelson (Communications and Social Media Specialist)**  
**The Council for Agricultural Science and Technology**  
**4420 West Lincoln Way**  
**Ames, Iowa 50014-3447**  
**Phone: 515-292-2125, ext. 222 (Dan) and 230 (Kimberly)**  
**E-mail: [dgogerty@cast-science.org](mailto:dgogerty@cast-science.org) and [knelson@cast-science.org](mailto:knelson@cast-science.org)**



**\*\* With assistance from Megan Wickham (Managing Scientific Editor)**

