



Friday Notes is designed to enhance communication among various agricultural sectors, educators, students, and the public who are interested in a variety of plant, animal, food, and environmental issues. *Friday Notes* advocates the pursuit of credible, unbiased, science-based information. Material contained in linked articles is from the original authors and does not necessarily reflect the views of CAST.

In This Issue....

- [Animal Agriculture News](#)
- [Food Science & Safety News](#)
- [Plant & Environmental News](#)
- [International News](#)
- [General Interest News](#)

Announcements



Save the date—on October 19 the Borlaug CAST Communication Award (BCCA) event will be held at the World Food Prize/Borlaug Dialogue in Des Moines, Iowa. [Dr. Martin Wiedmann](#) will receive the 2022 BCCA.

The [USDA Food Loss and Waste Innovation Fair](#) will be held September 14 as a virtual event.

CAST College Corner

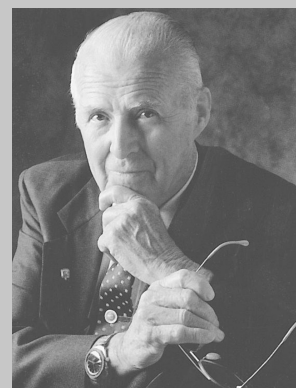
[UC Davis](#) researchers examine how different types of yeast affect flavor profile during beer production.

The [University of Nebraska](#) will facilitate "Communicating with Farmers Under Stress" workshops for community members amidst natural disasters, droughts, wildfires, etc.

August 5, 2022

CAST Remembers Dr. Norman Borlaug

This article is part of a series highlighting CAST's 50th anniversary. The July 15 issue was proud to honor CAST's primary founder, Dr. Charles A. Black.



This week we would like to highlight Dr. Norman Borlaug's significant advocacy and involvement with CAST.

Most know Dr. Borlaug as a Nobel Peace Prize recipient and as "The Man Who Fed the World," among other commendable accomplishments as a scientist and communicator. Perhaps less known is that Dr. Borlaug's support and backing played a significant role in CAST's establishment within the agribusiness community during its early years.

Further, his remarks as a featured speaker at a CAST conference in January 1973 were later published as [CAST's first paper, Agricultural Science and the Public](#); and, before his death in 2009, he wrote the preface to the January 2010 CAST paper, [Agricultural Productivity Strategies for the Future: Addressing U.S. and Global Challenges](#), which was dedicated to his memory.

Dr. Borlaug's legacy with CAST continues through the Borlaug CAST Communication Award (BCCA), which was renamed in his honor from the Charles A. Black Award. We encourage you to visit the CAST website to read the [CAST staff's heartfelt and comprehensive tribute](#) to him. Fittingly, it concludes with these simple words of gratitude:

Thank you, Dr. Borlaug.

The history of the BCCA will be highlighted next in this series.

News and Views

[University of Kentucky](#) researchers are working with the U.S. Army to combat issues with soldier health and diet.

CAST Social Media

Visit our website



CAST [welcomes ideas](#) for future publications and projects.

USDA Updates: The USDA 1) is increasing the amount of funding available for the [Spot Market Hog Pandemic Program \(SMHPP\)](#), 2) is partnering with the EPA to [provide wastewater sanitation](#) to underserved communities, and 3) has processed more than 255,000 applications for the new [Emergency Relief Program \(ERP\) via streamlined delivery](#).

Far Side of the Barn

Thar She Blows! Boaters and whale watchers off Massachusetts got a surprise over the weekend when a [humpback whale breached and landed](#) on the bow of a 19-foot vessel. This [video shows the whale landing](#).



CAST Updates

A Note of Gratitude to CAST Members

As a member-supported, 501(c)3 nonprofit—**celebrating its 50th anniversary this year**—the CAST Boards and staff are highly aware that CAST members are the life blood of this organization. From keeping the lights on and our small staff compensated, to supporting the publications and agricultural resources we provide to anyone at no cost...it is all thanks to our thoughtful members and donors.

We're fortunate to have a diverse membership consisting of companies, nonprofit organizations, scientific and professional societies, universities, and libraries that represent a wide variety of ag interests around animal and plant science, food, meteorology, law, and economics. In addition, our individual members range from university students and recent graduates, to retired professionals, scientists, and mindful individuals who have been with us for decades.

But one thing they all have in common: a passion for—and commitment to—supporting CAST's mission:

CAST convenes and coordinates networks of experts to assemble, interpret, and communicate credible, unbiased, science-based information to policymakers, the media, the private sector, and the public.

Because of that passion and invaluable support, CAST volunteers have been creating and providing credible information about the science, technology, and innovation so important to food, agriculture, and the environment **for 50 years!**

And we thank you all!

Not a member yet? [Learn more here!](#)



Animal Agriculture and Environmental News

Music to Their Ears: Scientists are investigating a farmer's claim that [different styles of music](#) affect the behavior of his pigs.

Anthrax & Cattle: The Colorado State

Veterinarian's [office has confirmed a case](#) of anthrax in a beef cattle herd. The last confirmed cases were in 2012.

Dairy Research: A grain, feed, and food company has donated \$500,000 to a university to help construct the [nation's largest research dairy](#).



All manure is not the same. That's why a group of researchers is taking another look at [manure nutrient "book values."](#)

Food Science and Safety News

Agrifood System Resilience: Experts propose [short-, medium-, and long-term practical actions](#) to respond to the looming global food crisis catalyzed by the Russia-Ukraine war.

Salmonella: The USDA's Food Safety and Inspection Service is announcing that it will be [declaring Salmonella an adulterant](#) in breaded and stuffed raw chicken products.

CAST Issue Paper: In September 2018, CAST released the paper [Food Loss and Waste](#).



Expiration dates lead to lots of food waste, though [these dates vary widely by state](#).

Plant Agriculture and Environmental News

Tree-Planting Projects: Animated maps reveal climate lessons and show how [forests lost 8,000 years of stored carbon](#) in a few generations.

Growing in the Dark: Experiments suggest that it might become possible to [nourish plants without photosynthesis](#)—a tool that could one day help feed astronauts and a crowded planet.

Home Gardens: Iowa State University offers tips for [growing edible garden beans](#) and ways to [attract butterflies and other pollinators](#) to your garden.



American ag groups are asking for the [tariff to be lifted](#) on Moroccan fertilizer.

International News

Exports from Ukraine: The prospects of Ukraine [moving ag commodities](#) through Black Sea ports appear more positive.

Rice: By giving a Chinese rice variety a second copy of one of its own genes, researchers have [boosted its yield by up to 40%](#).

Protesting Farmers: Dutch farmers dumped



manure and set hay on fire along major highways, prompting traffic jams in central and eastern parts of the Netherlands, [in protest over government plans](#) to reduce fertilizer use and livestock numbers.

Australia sees a long growing season for avocados; oversupply means exports are up 350%.

General Interest News

Farm Use to Commercial Use: Over a 15-year period, the U.S. has lost farmland to commercial uses at the [rate of 2,000 acres per day](#).

Rural Internet: The President's administration announced that it will provide \$401 million to provide access to [high-speed internet for 31,000 rural residents](#) and businesses in 11 states.

Protesters at the Port: Protesters and picketing lines halted operations at the [third-busiest port on the U.S.](#) West Coast, the Port of Oakland, for nearly a week.



[Technology, pathogens, and diligence](#) were the watchwords from two leaders from the USDA and FDA as they addressed attendees at a food conference.

Photo Credits

Far Side from ArtTower/Pixabay. Animal from Farm Journal. Food from mashed.com. International from scitechdaily.com.

General from *Coral Beach*. Unless otherwise noted, photos courtesy of the USDA Agricultural Research Service, Constant Contact, or CAST.

Societies, Companies, and Nonprofit Organizations Serving on the CAST Board of Representatives

- * Agricultural & Applied Economics Association
- * American Association of Avian Pathologists
- * American Association of Bovine Practitioners
- * American Bar Association, Section of Environment, Energy, & Resources-Agricultural Management
- * American Dairy Science Association
- * American Farm Bureau Federation
- * American Meat Science Association
- * American Meteorological Society, Committee on Agricultural and Forest Meteorology
- * American Seed Trade Association
- * American Society of Agricultural and Biological Engineers
- * American Society of Agronomy
- * American Society of Animal Science
- * American Society of Plant Biologists
- * American Veterinary Medical Association
- * Association of Equipment Manufacturers
- * Aquatic Plant Management Society
- * BASE Corporation
- * Bayer
- * Mississippi State University
- * National Cattlemen's Beef Association, a Contractor to the Beef Checkoff
- * National Corn Growers Association/Iowa Corn Promotion Board
- * National Milk Producers Federation
- * National Pork Board
- * National Turkey Federation
- * North Central Weed Science Society
- * Northeastern Weed Science Society
- * Penn State University
- * Poultry Science Association
- * Rural Sociological Society
- * Society for In Vitro Biology
- * Society for Range Management
- * Soil Science Society of America
- * Syngenta Crop Protection
- * The Fertilizer Institute
- * The Minor Use Foundation
- * Tuskegee University
- * United Soybean Board
- * University of Nevada-Reno

- * Corteva Agriscience
- * CropLife America
- * Crop Science Society of America
- * Innovation Center for U.S. Dairy
- * Iowa State University

- * U.S. Poultry and Egg Association
- * Weed Science Society of America
- * Western Society of Weed Science
- * Zoetis

CAST, through its network of experts, assembles, interprets, and communicates credible, balanced, science-based information to policymakers, the media, the private sector, and the public.

Members of CAST's Education Program

- * Cornell University
- * Iowa State University
- * Kansas State University
- * Mississippi State University
- * North Carolina Agricultural and Technical State University
- * North Carolina State University
- * Penn State University
- * Texas A&M University College of Ag & Life Sciences
- * The Ohio State University
- * Tuskegee University

- * University of Arkansas System Division of Agriculture
- * University of California-Davis
- * University of Florida Institute of Food and Agricultural Sciences
- * University of Kentucky
- * University of Missouri-Columbia
- * University of Nebraska Agricultural Research Division
- * University of Nevada-Reno College of Agriculture, Biotechnology and Natural Resources

Dylana Luett (Communications and Social Media Specialist)
 dluett@cast-science.org
 The Council for Agricultural Science and Technology
 4420 West Lincoln Way
 Ames, Iowa 50014-3447
 Phone: 515-292-2125



The Science Source for Food,
 Agricultural, and Environmental Issues

*** With assistance from Colleen Hamilton (Membership Specialist) and Nick Plaughter (Communications Project Coordinator)*

CAST provides Friday Notes as a benefit to its members. Please do not forward, edit, copy, or distribute the Notes in any form to nonmembers without the express permission of the CAST CEO/EVP Kent Schescke (kschescke@cast-science.org). Instead, please encourage your colleagues to join CAST and thereby become eligible for all membership benefits. Contact Colleen Hamilton at 515-292-2125 or chamilton@cast-science.org, or [CLICK HERE](#) for CAST membership information.

Council for Agricultural Science and Technology
www.cast-science.org

