

CAST President-Elect for 2022-2023



Dr. J. Alex Thomasson—Head of the Mississippi State University Department of Agricultural and Biological Engineering and William B. and Sherry Berry Endowed Chairholder—was elected as the [CAST President-Elect for 2022-2023](#). Thomasson will follow Dr. Sally Flis as CAST President from 2023-2024. He represents the American Society of Agricultural and Biological Engineers on CAST's Plant Agriculture and Environmental Issues work group. He has been involved in writing two CAST papers and has served as a liaison on other CAST publications.

His vision for CAST includes maintaining scientific objectivity so position papers are viewed as informed and credible. Thomasson said, "Within CAST's position as a scientific authority on agricultural matters, modern means of communicating critical ideas to the public should be explored and adopted where appropriate."

2022 Borlaug CAST Communication Award Presentation

On October 19, Dr. Martin Wiedmann was presented with the 2022 Borlaug CAST Communication Award (BCCA). The BCCA breakfast was held as a side-event to the 2022 World Food Prize at the Iowa Events Center in Des Moines, Iowa. Wiedmann, Gellert Family Professor of Food Safety, Department of Food Science in the College of Agriculture and Life Sciences at Cornell University, spoke on *Beauty and risk: Thoughts on communicating food safety risks*. Wiedmann's presentation was recorded and is on the [CAST YouTube account](#). The press release [can be found here](#).



Nominations are now open for the 2023 BCCA, an honor that recognizes professionals actively working in the agricultural, environmental, or food sectors who are promoting agricultural science in the public policy arena. Nomination packets are [on the CAST website](#), with a submission deadline of February 26, 2023.

2022 CAST Annual Meeting

CAST's 50th anniversary celebration culminated at the 2022 Annual Meeting on October 25-27 in Ames, Iowa. A few highlights of the event included:

- Iowa State University (ISU) President Dr. Wendy Wintersteen spoke at the 50th anniversary reception, hosted by ISU.
- Invited speakers included Dr. Dan Grooms, Dr. Dan Robison, Dr. Ruth MacDonald, Dr. Rodrigo Tarté, Dr. Lisa Schulte-Moore, Dr. Mohamed El-Gazzar, and Dr. Eric Gonder.
- Three past EVPs—Dr. Richard Stuckey, Dr. John Bonner, and Linda Chimenti—joined EVP Kent Schescke in a discussion reflecting on the past 50 years of CAST.
- Meeting attendees toured the Corteva research facilities in Johnston, Iowa, followed by a reception and dinner where Iowa Secretary of Agriculture Mike Naig spoke.
- Current CAST President Dr. Anna Dilger passed the gavel on to Dr. Sally Flis as the incoming CAST President.



Annual Meeting attendees at Corteva.



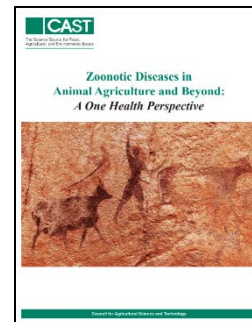
Dr. Wendy Wintersteen and Dr. Dan Robison.

Student Scholarship Recipients

This year, 13 graduate students from Iowa State University received the CAST Science Communication Scholarship during the CAST Annual Meeting. The recipients were nominated by their professors. A blog with all the students' media is [available for viewing](#) on the CAST website. This scholarship is supported by individual donors of CAST.

Special Publication Released

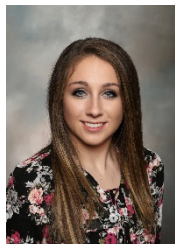
On November 14, CAST released [Zoonotic Diseases in Animal Agriculture and Beyond: A One Health Perspective](#). By looking through the lens of One Health, we identify key lessons learned in the dynamics of zoonotic diseases including their transmission and prevention. Kent Schescke and publication task force chair, Dr. Lonnie King, Dean Emeritus of The Ohio State University College of Veterinary Medicine, traveled to Washington, D.C. to present at three different locations in the area. A webinar was held on November 17 and featured a panel with Dr. King, Dr. Bernadette Dunham, and Dr. Laura Kahn. Dr. Stephanie Masiello Schuette was the moderator. The recorded webinar, publication, Ag quickCAST, op-ed, and webinar Q&A [can be found here](#).



New Board-level Members

CAST is pleased to welcome the [Society for Range Management](#) (SRM) as a new society member. The SRM is an international organization that includes people who manage, conserve, and enjoy the vast landscapes known as rangelands. Also joining as a company member is [The Mosaic Company](#), which is the world's leading integrated producer of concentrated phosphate and potash—two of the three most important nutrients in agriculture. CAST also has three new Education Program members, including the [University of Illinois College of Agricultural, Consumer, and Environmental Sciences](#), the [University of Georgia College of Agricultural and Environmental Sciences](#), and [Purdue University Libraries and School of Information Studies](#). Please visit the CAST website for information on each member's representative.

CAST Staff Updates



Rachel
Bauler

Two student staff members are starting their next life chapters after working with CAST. [Rachel Bauler](#), Student Administrative Assistant, will be student teaching in the spring and graduate from Iowa State University in May. Her favorite memories while working with CAST have been all the funny moments in the office and getting to attend the BCCA presentation. [Nick Plaucher](#), CAST Communications Project Coordinator, will be graduating from University of Missouri this December and will pursue a career in communications and leadership. His favorite memories at CAST include interviewing industry leaders for media projects and working on *Friday Notes*.



Nick
Plaucher

Stay Aware and Connected Through CAST

CAST's *Friday Notes* newsletter, blog, and other social media outlets regularly provide important updates about news headlines, announcements, and pertinent educational resource material related to agriculture and science. Another CAST resource includes self-study guides focused on CAST's papers that can then be used by teachers and parents for their online learning activities and in other educational settings.

Forthcoming Publications Under Development

RNA Interference Technology in Agriculture: Methods, Applications, and Governance

Environmental, Social, and Economic Impacts of Implementing Sustainable Intensification in Agriculture at Scale

Happy Holidays from everyone at CAST!
Thank you for celebrating 50 years with us!

CAST[®]

The Science Source for Food,
Agricultural, and Environmental Issues

www.cast-science.org