



*Friday Notes* is designed to enhance communication among various agricultural sectors, educators, students, and the public who are interested in a variety of plant, animal, food, and environmental issues. *Friday Notes* advocates the pursuit of credible, unbiased, science-based information. Material contained in linked articles is from the original authors and does not necessarily reflect the views of CAST.

## In This Issue....

[Animal Agriculture News](#)  
[Food Science & Safety News](#)  
[Plant & Environmental News](#)  
[International News](#)  
[General Interest News](#)

## Announcements

The webinar, "[Managing a PRRS outbreak: How can we progress to farm recovery?](#)" will be held on August 23, 2 p.m. EDT.

Agriculture Secretary Vilsack chaired the [APEC Food Security Ministerial](#), highlighting principles for achieving good security through sustainable agriculture.

## CAST Social Media

[Visit our website](#)



CAST [welcomes ideas](#) for future publications and

**August 4, 2023**

## CAST Endings & Beginnings

The CAST staff and boards are very excited to announce that Chris Boomsma, our incoming EVP/CEO, officially started as of August 1!



Chris comes to CAST from the American Society of Agronomy, the Crop Science Society of America, and the Soil Science Society of America (ACSESS), where he served as their director of education.

Kent Schescke has served as the CAST/EVP for the past eight years as part of a nearly 50 year-career in agriculture, education, and science communication. He will continue to work with CAST through August into early September to help facilitate a smooth leadership transition.

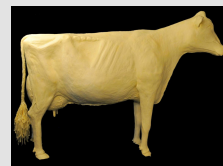
**Welcome Chris, and Best Wishes, Kent!**

## News and Views

**USDA Updates:** The USDA (1) Forest Service has published a report that provides a snapshot of [current U.S. forest and rangeland conditions](#); (2) broke ground on a [new state-of-the-art agricultural research facility](#) that will house USDA and WSU scientists; (3) helped develop [healthier sorghum varieties](#).

## Far Side of the Barn

**Inquiring Minds Want to Know:** One of the main attractions at the Iowa State Fair each year is the butter cow, first sculpted by J.K. Daniels in 1911. But what happens to the [butter cow](#) when the fair is over?



## CAST Updates

### CAST Hosts Reception to Celebrate Kent, Welcome Chris

The CAST staff hosted a reception on Thursday this week from 2-4 p.m. at our office in Ames, Iowa, to celebrate Kent Schescke's retirement from CAST, and to welcome Chris Boomsma as the incoming EVP/CEO.

Kent and Chris virtually greeted well-wishers who were not able to attend in person before the reception even began. Many more came to the reception, including former staff and board members, colleagues, members, friends, and family.

"I would like to thank all those who attended, and especially the staff for their work and planning to make it happen. It was wonderful that many of my family were able to attend and surprise me," says Kent.

The CAST staff would also like to thank everyone who made the day a very special, memorable occasion for Kent and Chris. Further, every congratulatory email, card, call, and visit we received over the past few weeks were noted and appreciated!

Here are a few photos of the event for you to enjoy, thanks to our awesome photographers, Dwight Tomes and Megan Wickham. To view more, please [visit our website](#).



## Animal Agriculture and Environmental News

**Wanted: More Veterinarians:** The [need for more rural Iowa veterinarians](#) continues to grow as vet clinics become fewer and farther between.

**Related to Above:** See CAST paper, [Impact of Recruitment and Retention of Food Animal Veterinarians on the U.S. Food Supply](#), published April 2020.

**Keeping Animals Cool:** Pig cooling pads and weather forecasts for cows are [high-tech ways](#) to make meat in a warming world.



**Virtual Fencing:** A Canadian study showed that [virtual fencing](#) can be helpful for cross fencing to manage grazing, but didn't eliminate the need for a pasture perimeter fence.

## Food Science and Safety News

**Plant-based Meat Sales:** U.S. retail sales of plant-based meat alternatives [have continued to decline](#), says a Circana report.

**Food Labeling:** A dairy group suggests guidance is an encouraging step but falls short of ending [misleading plant-based labeling](#).

**Cheaper Food:** Stable prices and more promotions are [great news for shoppers](#), but frustrating for retailers and manufacturers.



**Reducing Food Waste:** The practice of [discounting produce](#) at the end of its shelf-life can help keep more perishable items out of landfills and reduce overall food waste.

## *Plant Agriculture and Environmental News*

**Detecting Plant Viruses:** Arkansas plant pathologists have [developed a novel protocol](#) to verify diagnostic tests.

**Precision Technology:** Purdue University and CropLife share the results of a study on [ag retailers' use of precision technology](#).

**Seaweed:** As climate change threatens crops and fisheries, [seaweed](#) may be an option with a lower carbon footprint.



**Plant Breeding:** Iowa State University research on genetic mutations aims to [advance plant breeding](#).

## *International News*

**China:** [Meat consumption in China](#) has increased significantly and could climb further, giving the country one of the highest per capita consumption rates in Asia, according to a USDA report. The USDA also issued a report showing the [world's largest meat importers](#).

**Costa Rica:** Scientists in Costa Rica [save seeds](#) to feed future generations.

**Syria:** Farmers in Syria are suffering from a [lack of water and electricity](#), dramatically affecting the country's agriculture.



**Nigeria:** The UK offers support to make [Nigeria's agriculture sector](#) more climate-resilient.

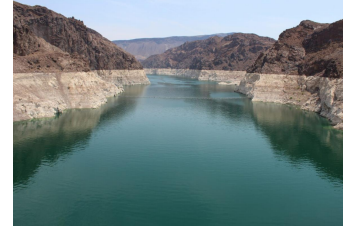
## *General Interest*

**Food Security Update:** The Food and Agriculture Organization's (FAO) "[The State of Food Security and Nutrition in the World 2023](#)" discusses urbanization, agrifood systems transformation, and

healthy diets across the rural–urban continuum.

**Pet Food Labeling:** The AAFCO approved changes in the [labeling of pet food](#), a process to be phased in over the next six years.

**Bulbs Banned:** [Incandescent light bulbs](#) are now banned in the US, per new energy efficiency rules.



**Colorado River Crisis:** Rising temperatures have sucked more than 10 trillion gallons of water out of the [Colorado River Basin](#) between 2000 and 2021.

## Photo Credits

Unless otherwise noted, photos courtesy of the USDA Agricultural Research Service, Constant Contact, or CAST.

ISU plant breeding photo by Nazmul Hossain, Iowa State University. Butter cow image by WNAX (AM Radio Station).

Colorado River photo by Luke Runyon/KUNC.

## *Societies, Companies, and Nonprofit Organizations Serving on the CAST Board of Representatives*

- \* Agricultural & Applied Economics Association
- \* American Association of Avian Pathologists
- \* American Association of Bovine Practitioners
- \* American Bar Association, Section of Environment, Energy, & Resources-Agricultural Management
- \* American Dairy Science Association
- \* American Farm Bureau Federation
- \* American Meat Science Association
- \* American Meteorological Society, Committee on Agricultural and Forest Meteorology
- \* American Seed Trade Association
- \* American Society of Agricultural and Biological Engineers
- \* American Society of Agronomy
- \* American Society of Animal Science
- \* American Society of Plant Biologists
- \* American Veterinary Medical Association
- \* Association of Equipment Manufacturers
- \* Aquatic Plant Management Society
- \* BASF Corporation
- \* Bayer Crop Science
- \* Corteva Agriscience
- \* CropLife America
- \* Crop Science Society of America
- \* Global Teach Ag Network
- \* Innovation Center for U.S. Dairy
- \* Iowa State University
- \* Minor Use Foundation, Inc.
- \* Mississippi State University
- \* National Cattlemen's Beef Association, a Contractor to the Beef Checkoff
- \* National Corn Growers Association/Iowa Corn Promotion Board
- \* National Milk Producers Federation
- \* National Pork Board
- \* National Turkey Federation
- \* North Central Weed Science Society
- \* Northeastern Weed Science Society
- \* Nutrients
- \* Penn State University
- \* Poultry Science Association
- \* Rural Sociological Society
- \* Society for In Vitro Biology
- \* Society for Range Management
- \* Soil Science Society of America
- \* Syngenta Crop Protection
- \* The Fertilizer Institute
- \* The Mosaic Company
- \* Tuskegee University
- \* United Soybean Board
- \* University of Nevada-Reno
- \* U.S. Poultry and Egg Association
- \* Weed Science Society of America
- \* Western Society of Weed Science

*CAST, through its network of experts, assembles, interprets, and communicates credible, balanced, science-based information to policymakers, the media, the private sector, and the public.*

## Members of CAST's Education Program



- \* Cornell University
- \* Iowa State University
- \* Kansas State University
- \* Mississippi State University
- \* North Carolina Agricultural and Technical State University
- \* North Carolina State University
- \* Penn State University
- \* Purdue University Libraries and School of Information Studies
- \* Texas A&M University College of Ag & Life Sciences
- \* The Ohio State University
- \* Tuskegee University

- \* University of Arkansas System Division of Agriculture
- \* University of California-Davis
- \* University of Florida Institute of Food and Agricultural Sciences
- \* University of Georgia
- \* University of Illinois College of Agricultural, Consumer and Environmental Sciences
- \* University of Kentucky
- \* University of Missouri-Columbia
- \* University of Nebraska Agricultural Research Division
- \* University of Nevada-Reno College of Agriculture, Biotechnology and Natural Resources

**Contact CAST:**

The Council for Agricultural Science and Technology  
4420 West Lincoln Way  
Ames, Iowa 50014-3447  
Phone: 515-292-2125



The Science Source for Food,  
Agricultural, and Environmental Issues

*CAST provides Friday Notes as a benefit to its members. Please do not forward, edit, copy, or distribute the Notes in any form to nonmembers without the express permission of the CAST CEO/EVP Chris Boomsma. Instead, please encourage your colleagues to join CAST and thereby become eligible for all membership benefits. Contact Colleen Hamilton at 515-292-2125 or , or [CLICK HERE](#) for CAST membership information.*

**Council for Agricultural Science and Technology**  
[\[www.cast-science.org\]](http://www.cast-science.org)

